

Network Cameras with ColorVu



DS-2CD2087G2-L(U)
8 MP 1/1.2" Bullet Network Camera with ColorVu

- 0.0005 lux @ F1.0
- 2.8, 4 or 6 mm fixed lens
- Colorful imaging 24/7
- Human/vehicle classification
- H.265+/H.265
- IP67
- 130 dB WDR
- -U: built-in microphone



DS-2CD2047G2-L(U)
4 MP 1/1.8" Bullet Network Camera with ColorVu

- 0.0005 lux @ F1.0
- 2.8, 4 or 6 mm fixed lens
- Colorful imaging 24/7
- Human/vehicle classification
- H.265+/H.265
- IP67
- 130 dB WDR
- -U: built-in microphone



DS-2CD2027G2-L(U)
2 MP 1/2.8" Bullet Network Camera with ColorVu

- 0.0005 lux @ F1.0
- 2.8, 4 or 6 mm fixed lens
- Colorful imaging 24/7
- Human/vehicle classification
- H.265+/H.265
- IP67
- 120 dB WDR
- -U: built-in microphone



DS-2CD2147G2-(SU)
4 MP 1/1.8" Dome Network Camera with ColorVu

- 0.0005 lux @ F1.0
- 2.8 or 4 mm fixed lens
- Colorful imaging 24/7, with dim environmental light requirement
- Human/vehicle classification
- H.265+/H.265
- IP67, IK10
- 130 dB WDR
- -SU: built-in microphone, alarm I/O 1/1, audio I/O 1/1



DS-2CD2127G2-(SU)
2 MP 1/2.8" Dome Network Camera with ColorVu

- 0.0005 lux @ F1.0
- 2.8 or 4 mm fixed lens
- Colorful imaging 24/7, with dim environmental light requirement
- Human/vehicle classification
- H.265+/H.265
- IP67, IK10
- 120 dB WDR
- -SU: built-in microphone, alarm I/O 1/1, audio I/O 1/1



DS-2CD2347G2-L(U)
4 MP 1/1.8" Turret Network Camera with ColorVu

- 0.0005 lux @ F1.0
- 2.8 or 4 mm fixed lens
- Colorful imaging 24/7
- Human/vehicle classification
- H.265+/H.265
- IP67
- 130 dB WDR
- -U: built-in microphone



DS-2CD2327G2-L(U)
2 MP 1/2.8" Turret Network Camera with ColorVu

- 0.0005 lux @ F1.0
- 2.8 or 4 mm fixed lens
- Colorful imaging 24/7
- Human/vehicle classification
- H.265+/H.265
- IP67
- 120 dB WDR
- -U: built-in microphone



DS-2CD2T87G2-L
8 MP 1/1.2" Bullet Network Camera with ColorVu

- 0.0005 lux @ F1.0
- 2.8, 4 or 6 mm fixed lens
- Colorful imaging 24/7
- Human/vehicle classification
- H.265+/H.265
- IP67
- 130 dB WDR



DS-2CD2T47G2-L
4 MP 1/1.8" Bullet Network Camera with ColorVu

- 0.0005 lux @ F1.0
- 2.8, 4 or 6 mm fixed lens
- Colorful imaging 24/7
- Human/vehicle classification
- H.265+/H.265
- IP67
- 130 dB WDR



DS-2CD2T27G2-L
2 MP 1/2.8" Bullet Network Camera with ColorVu

- 0.0005 lux @ F1.0
- 2.8, 4 or 6 mm fixed lens
- Colorful imaging 24/7
- Human/vehicle classification
- H.265+/H.265
- IP67
- 120 dB WDR



Headquarters
No.555 Qianmo Road, Binjiang District,
Hangzhou 310051, China
T +86-571-8807-5998
overseasbusiness@hikvision.com



Network cameras with ColorVu

View in Color, Even in Darkness

ColorVu
Technology
24/7 Colorful Imaging

Now Enhanced by **4K** and **AcuSense**



HIKVISION

www.hikvision.com

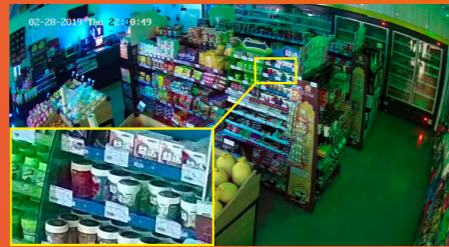
Even Without Supplemental Light You Will Still Enjoy

True Color Information

- Accurate color rendering
- Excellent performance in low-light environments



Unable to identify color



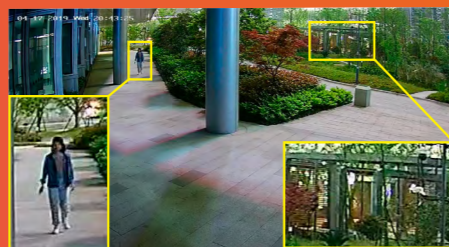
Accurate color

Better Visual Experience

- Balanced brightness
- F1.0 super aperture and advanced sensor guarantee realistic rendering



Blurry



Sharp

24/7 Color Imaging with Target Classification

Cameras with ColorVu capture human and vehicle targets with vivid details, providing video coverage with more useful information.

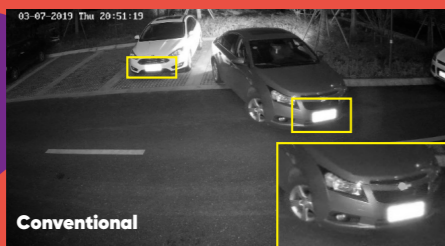
* Conventional images shown were shot with IR on and ColorVu images without supplemental light.



Conventional



ColorVu Technology



Conventional



ColorVu Technology

Combining Great Technologies for Great Image Quality and Usability

Advanced Hardware

F1.0 super large aperture
Advanced sensor

Reliable Quality

The focusing performance of ultra-high definition cameras with ColorVu technology is guaranteed by the active alignment technology and superlative quality control during production.



Pioneering Technology

Precise color rendition and image reproduction with advanced image signal processing algorithm

Embedded Deep Learning Chip

Supports AcuSense algorithm with human/vehicle classifications

NVRs



DS-7732NI-14/24P
32-Channel NVR with 4 HDDs

- Up to 32 video channels
- Decoding formats: supporting H.265/H.265+/H.264/H.264+/MPEG4
- Bandwidth: 320 Mbps incoming, 256 Mbps outgoing
- 16-ch 1080p decoding
- 2 HDMI, 1 VGA and 1 CVBS output
- eSATA by default
- 24 PoE ports
- 1.5U chassis



DS-7732NI-14/(16P)(B)
32-Channel NVR with 4 HDDs

- Up to 32 video channels
- Decoding formats: supporting H.265/H.265+/H.264/H.264+/MPEG4
- Bandwidth: 256 Mbps incoming, 256 Mbps outgoing
- 16-ch 1080p decoding
- 2 HDMI, 1 VGA and 1 CVBS output
- eSATA by default
- 16 PoE ports with the 16P model (optional)
- 1.5U chassis



DS-7716NI-14/(16P)(B)
16-Channel NVR with 4 HDDs

- Up to 16 video channels
- Decoding formats: supporting H.265/H.265+/H.264/H.264+/MPEG4
- Bandwidth: 160 Mbps incoming, 256 Mbps outgoing
- 16-ch 1080p decoding
- 2 HDMI, 1 VGA and 1 CVBS output
- eSATA by default
- 16 PoE ports with the 16P model (optional)
- 1.5U chassis



DS-7616NI-12/(16P)
16-Channel NVR with 2 HDDs

- Up to 16 video channels
- Decoding formats: supporting H.265/H.265+/H.264/H.264+/MPEG4
- Bandwidth: 160 Mbps incoming, 256 Mbps outgoing
- 16-ch 1080p decoding
- 1 HDMI, 1 VGA and 1 CVBS output
- 16 PoE ports with the 16P model (optional)
- 1U chassis



DS-7608NI-12/(8P)
8-Channel NVR with 2 HDDs

- Up to 8 video channels
- Decoding formats: supporting H.265/H.265+/H.264/H.264+/MPEG4
- Bandwidth: 80 Mbps incoming, 256 Mbps outgoing
- 16-ch 1080p decoding
- 1 HDMI, 1 VGA and 1 CVBS output
- 8 PoE ports with the 8P model (optional)
- 1U chassis